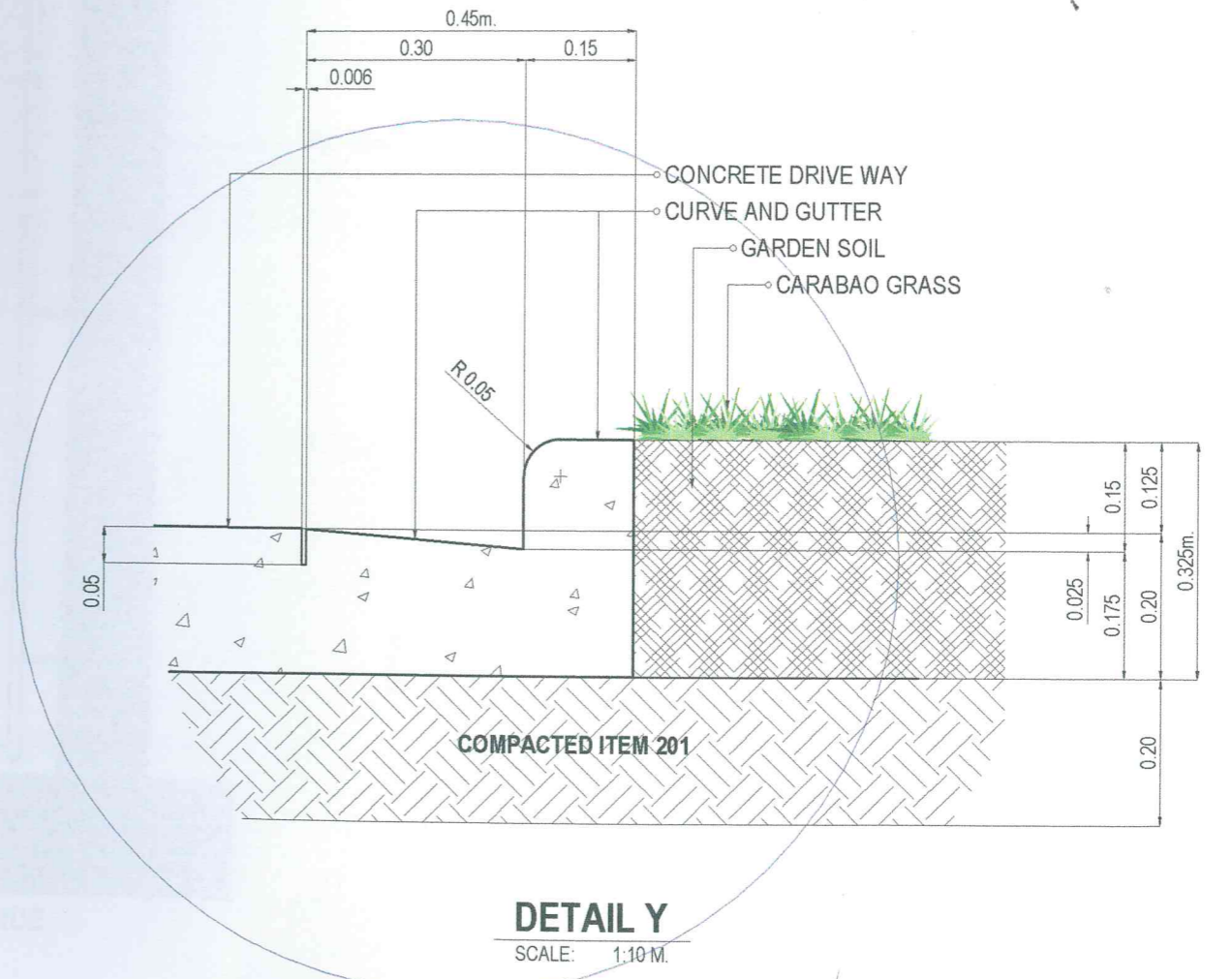
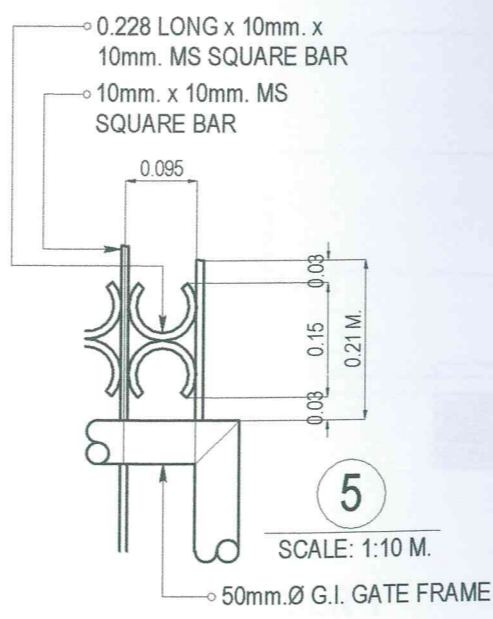
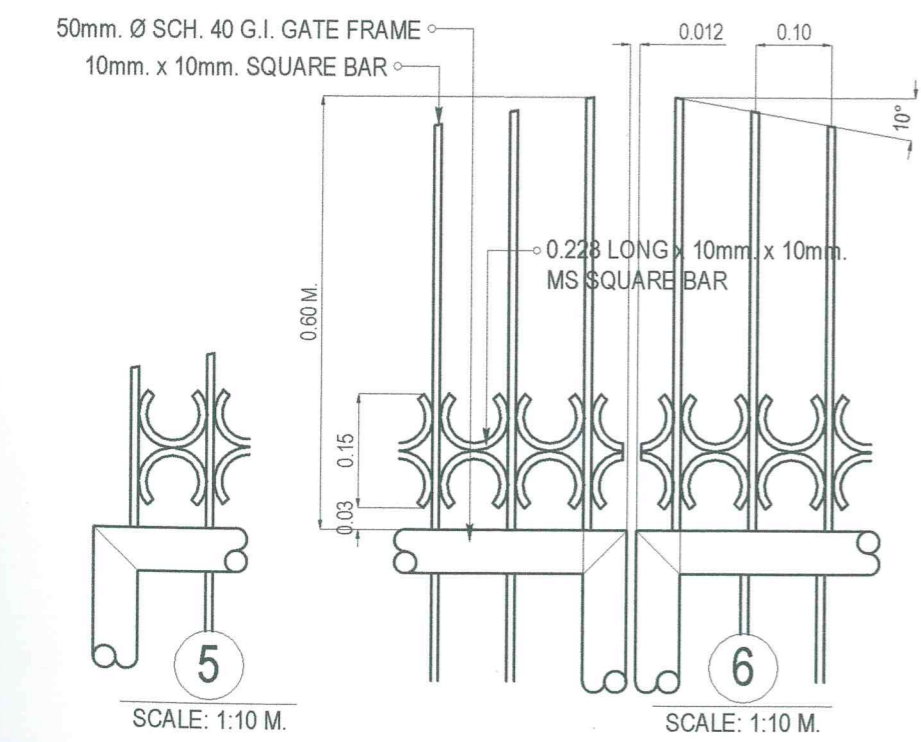
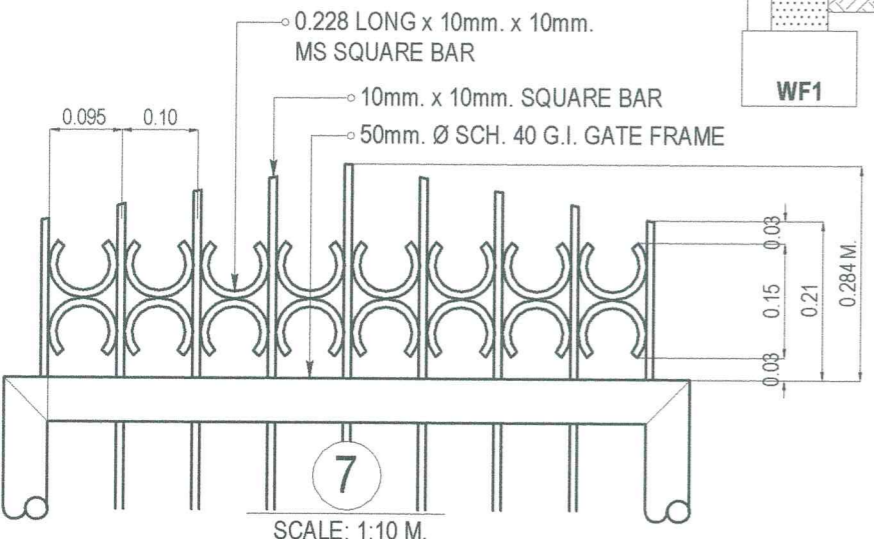
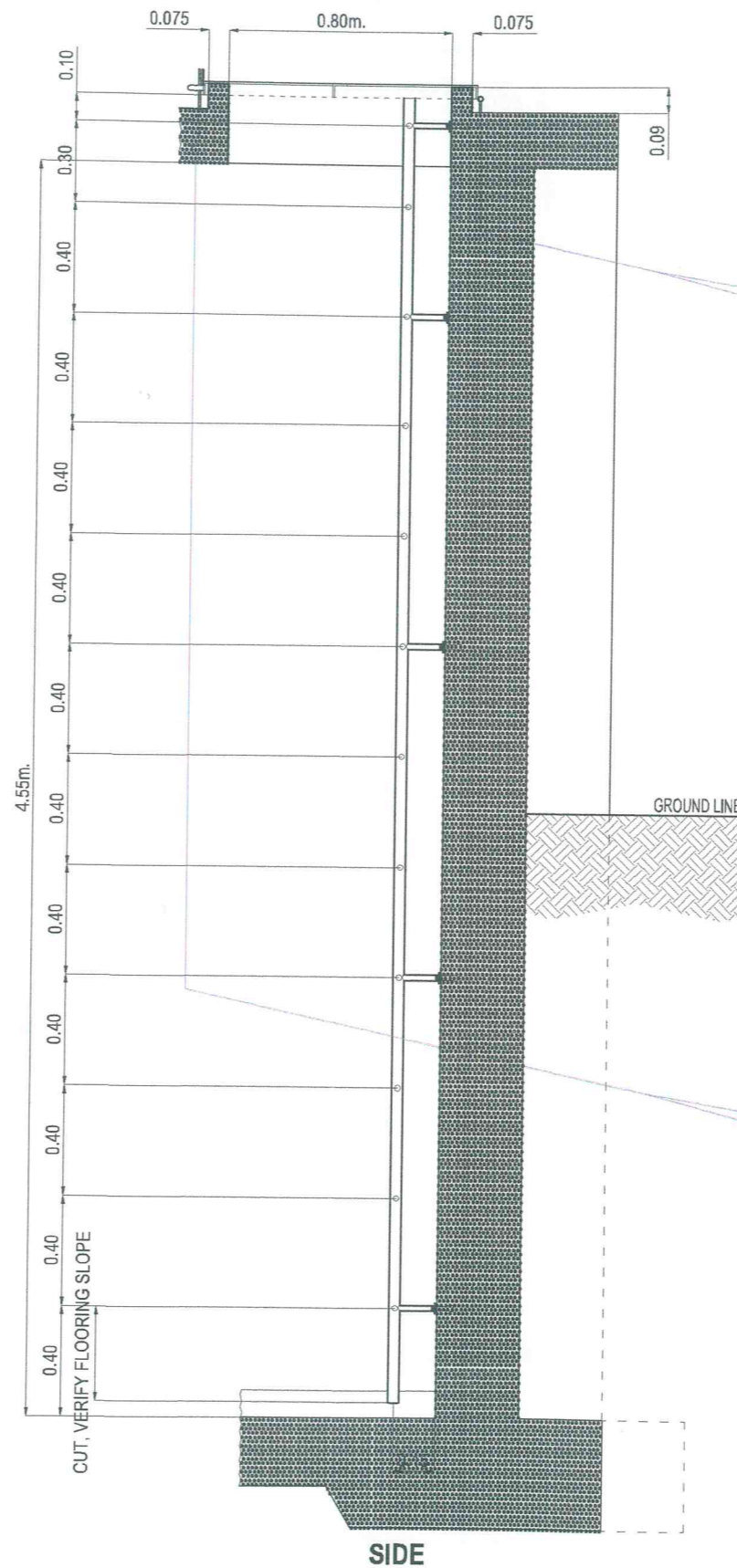
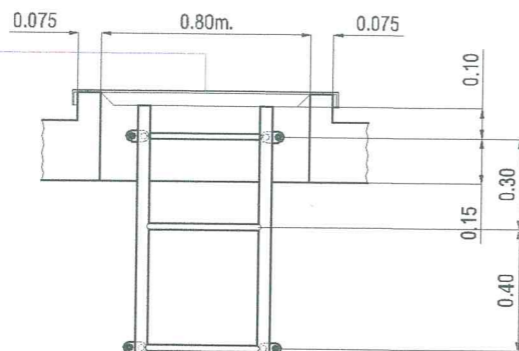
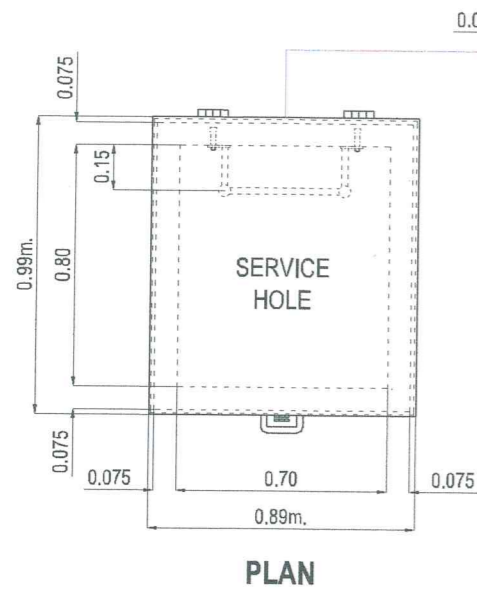


DRIVE WAY CROSS SECTION
SCALE: 1:20 M.

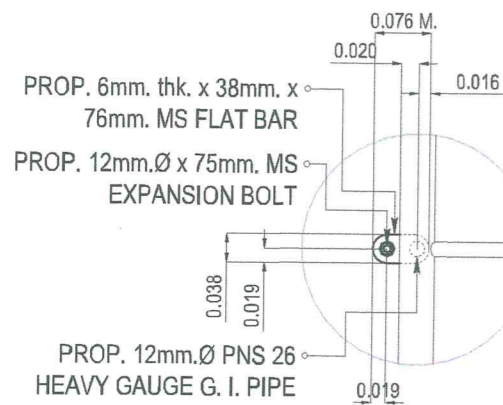


DETAIL Y
SCALE: 1:10 M.

	REVISIONS REV. DATE BY DESCRIPTION			PROJECT: PROPOSED 300 CU. M. REINFORCED CONCRETE GROUND TANKS AT BALUNO & BANDERA-DULIAN FOR DUMALON WATER SYSTEM	DRAWN BY: ARTHUR A. REYES PRINCIPAL DRAFTSMAN B - DESIGN DIVISION	PREPARED BY: BUNNY L. DAMPIOS SENIOR ENGINEER A - DESIGN DIVISION	REVIEWED BY: REX D. SALE, JR. SUPERVISING ENGINEER A - DESIGN DIVISION	SUBMITTED BY: EDITO M. BAUTISTA, JR. OIC - DESIGN DIVISION	RECOMMENDING PROJECT IMPLEMENTATION: MARLI ACOSTA DE FIESTA AGM - TECHNICAL SERVICES GROUP	APPROVED FOR PROJECT IMPLEMENTATION: REYNALDO R. CABILN GENERAL MANAGER	SHEET NO. 33
	SHEET CONTENT: AS INDICATED										

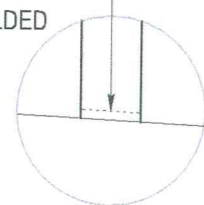


PROP. 32mm.Ø PNS 26 HEAVY GAUGE G. I. PIPE (STRINGER)



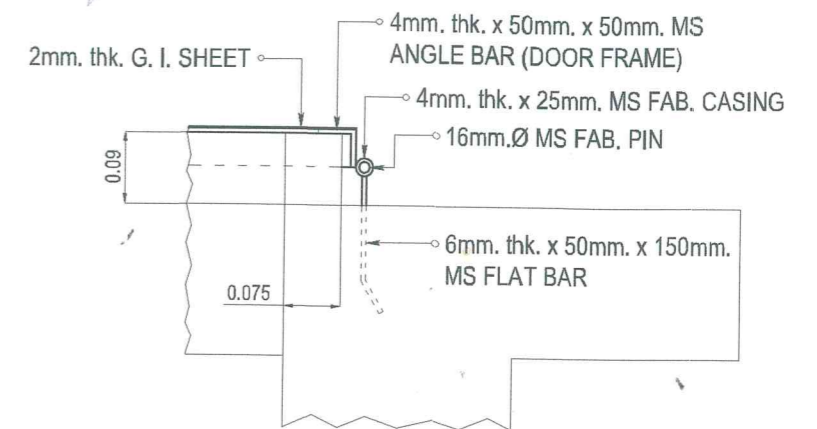
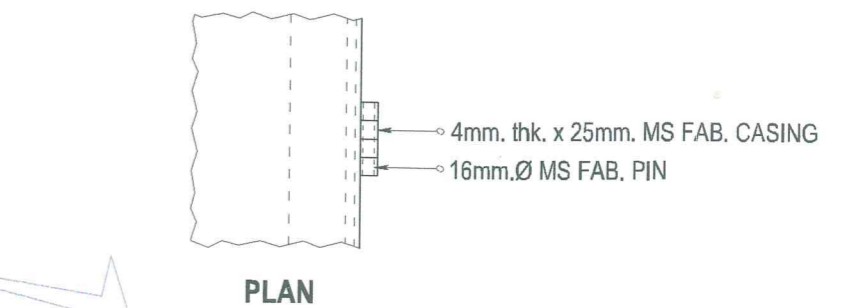
PROP. 12mm.Ø PNS 26 HEAVY GAUGE G. I. PIPE (STEP)

PROVIDE 4mm. thk. MS FAB. COVER, WELDED

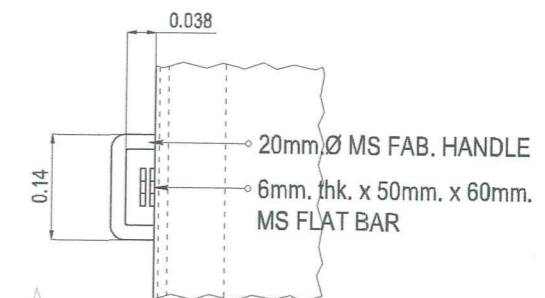


FRONT

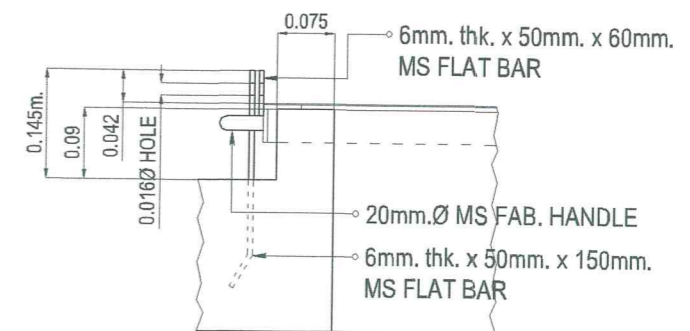
CUT, VERIFY FLOORING SLOPE



SIDE



PLAN



SIDE

DETAIL OF LADDER 1

SCALE: 1:250 M.



REV.	DATE	BY	DESCRIPTION

PROJECT: PROPOSED 300 CU. M. REINFORCED CONCRETE GROUND TANKS AT BALUNO & BANDERA-DULIAN FOR DUMALON WATER SYSTEM
 SHEET CONTENT: AS INDICATED

DRAWN BY: **ARTHUR A. REYES**
 PRINCIPAL DRAFTSMAN B - DESIGN DIVISION

PREPARED BY: **BUNNY L. DAMPIOS**
 SENIOR ENGINEER A - DESIGN DIVISION

REVIEWED BY: **REX D. SALE, JR.**
 SUPERVISING ENGINEER A - DESIGN DIVISION

SUBMITTED BY: **EDITO M. BAUTISTA, JR.**
 OIC - DESIGN DIVISION

RECOMMENDING PROJECT IMPLEMENTATION: **MARLI ACOSTA-DE FIESTA**
 ASM - TECHNICAL SERVICES GROUP

APPROVED FOR PROJECT IMPLEMENTATION: **REYNALDO R. CABILN**
 GENERAL MANAGER

SHEET NO. **34**