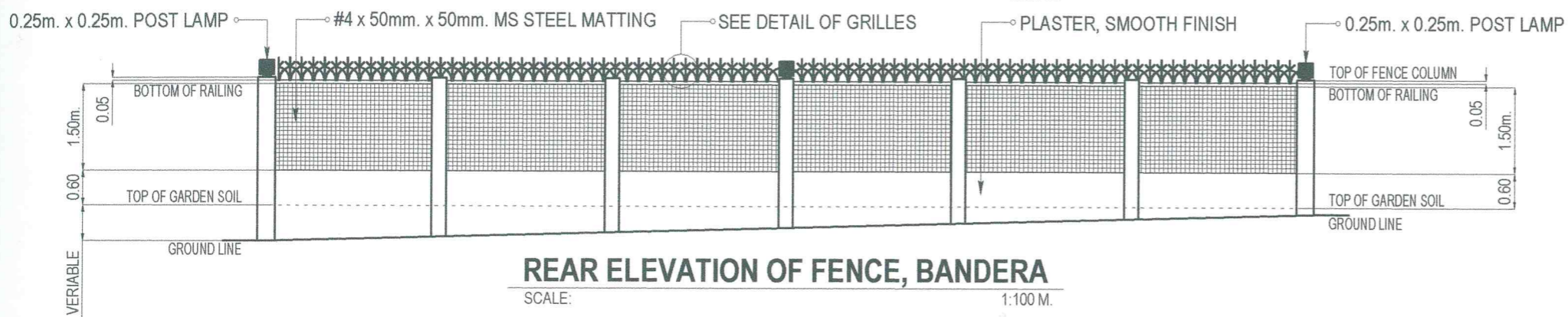


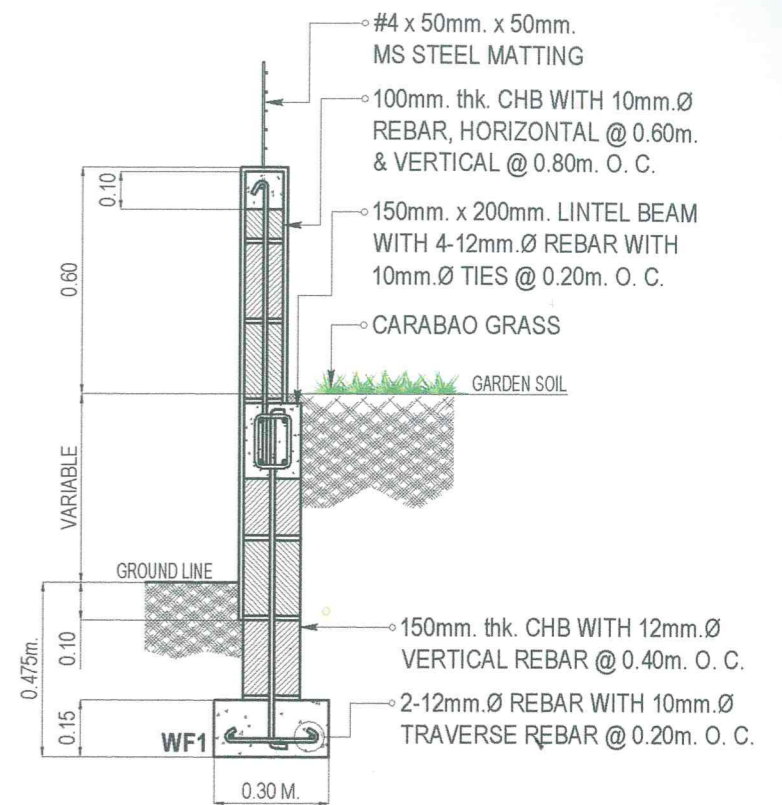
**FRONT ELEVATION OF FENCE, BANDERA**

SCALE: 1:100 M.



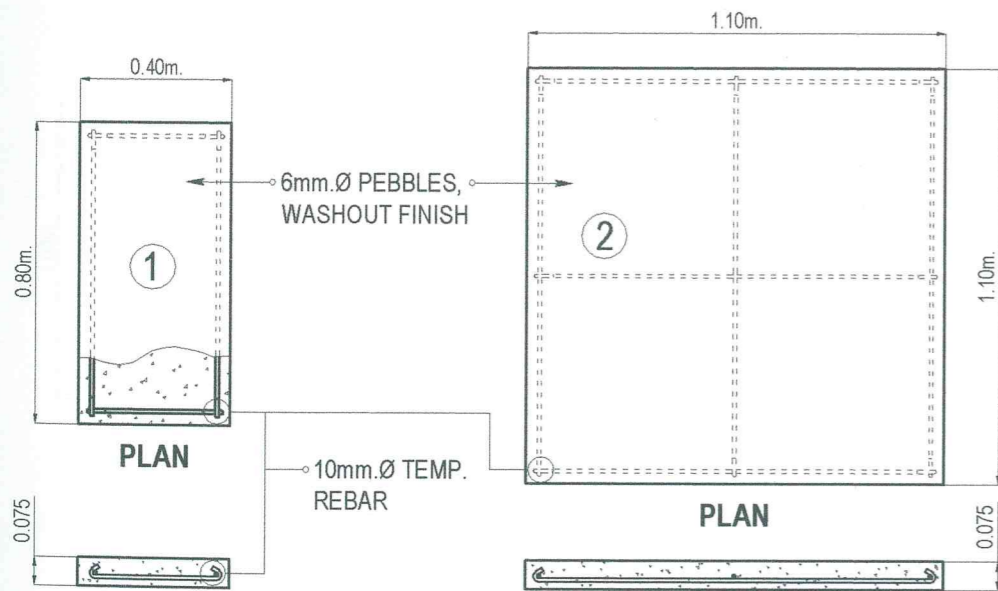
**REAR ELEVATION OF FENCE, BANDERA**

SCALE: 1:100 M.



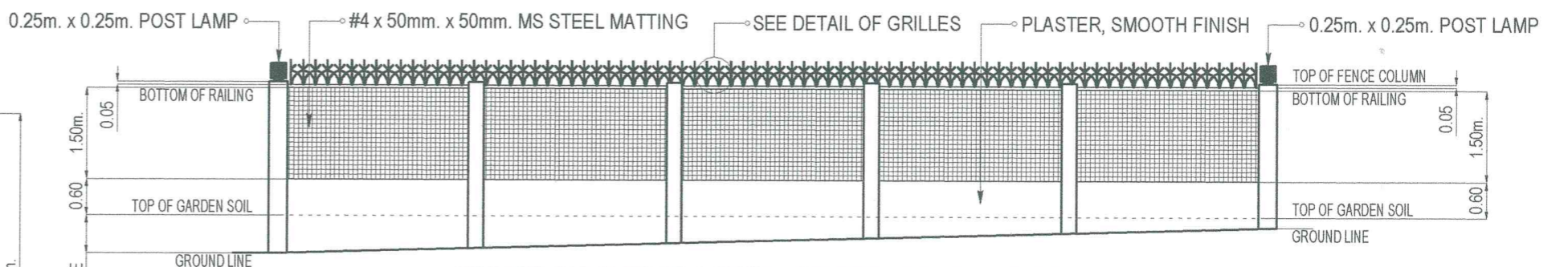
**DETAIL OF WALL FOOTING**

SCALE: 1:20 M.



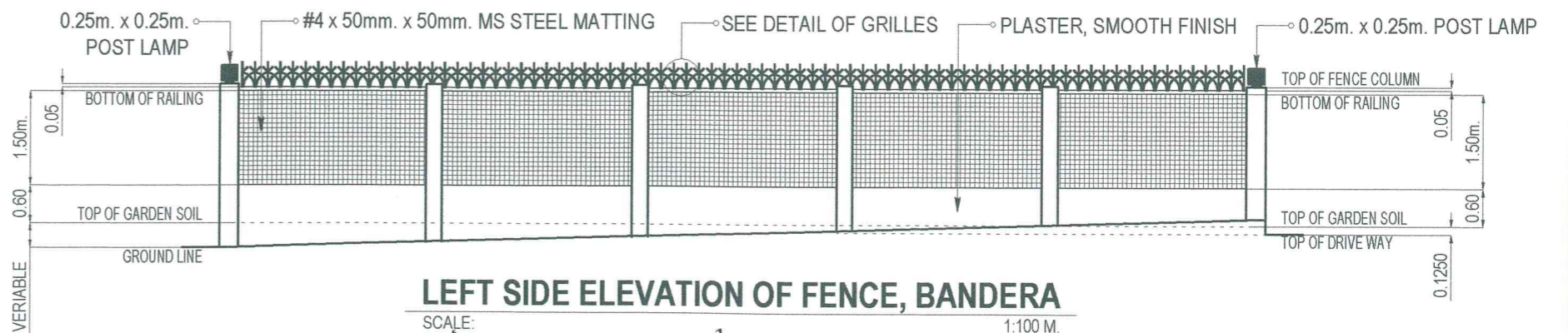
**DETAIL OF CONCRETE FIBER**

SCALE: 1:20 M.



**RIGHT SIDE ELEVATION OF FENCE, BANDERA**

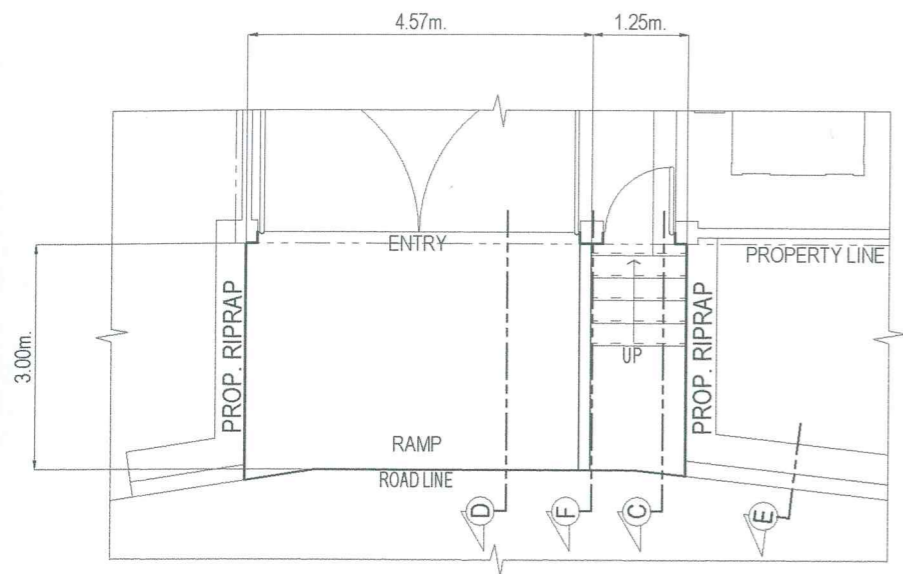
SCALE: 1:100 M.



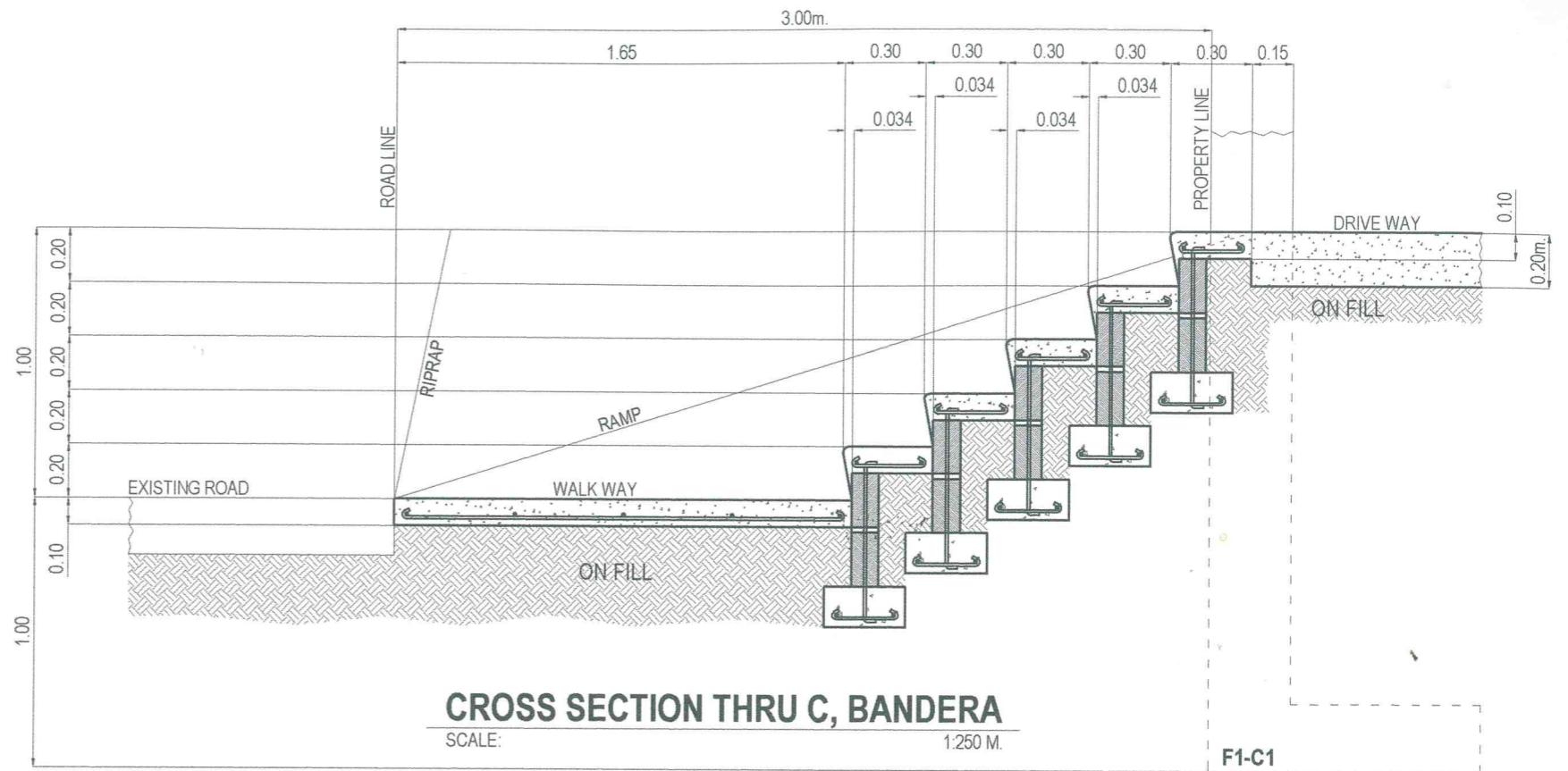
**LEFT SIDE ELEVATION OF FENCE, BANDERA**

SCALE: 1:100 M.

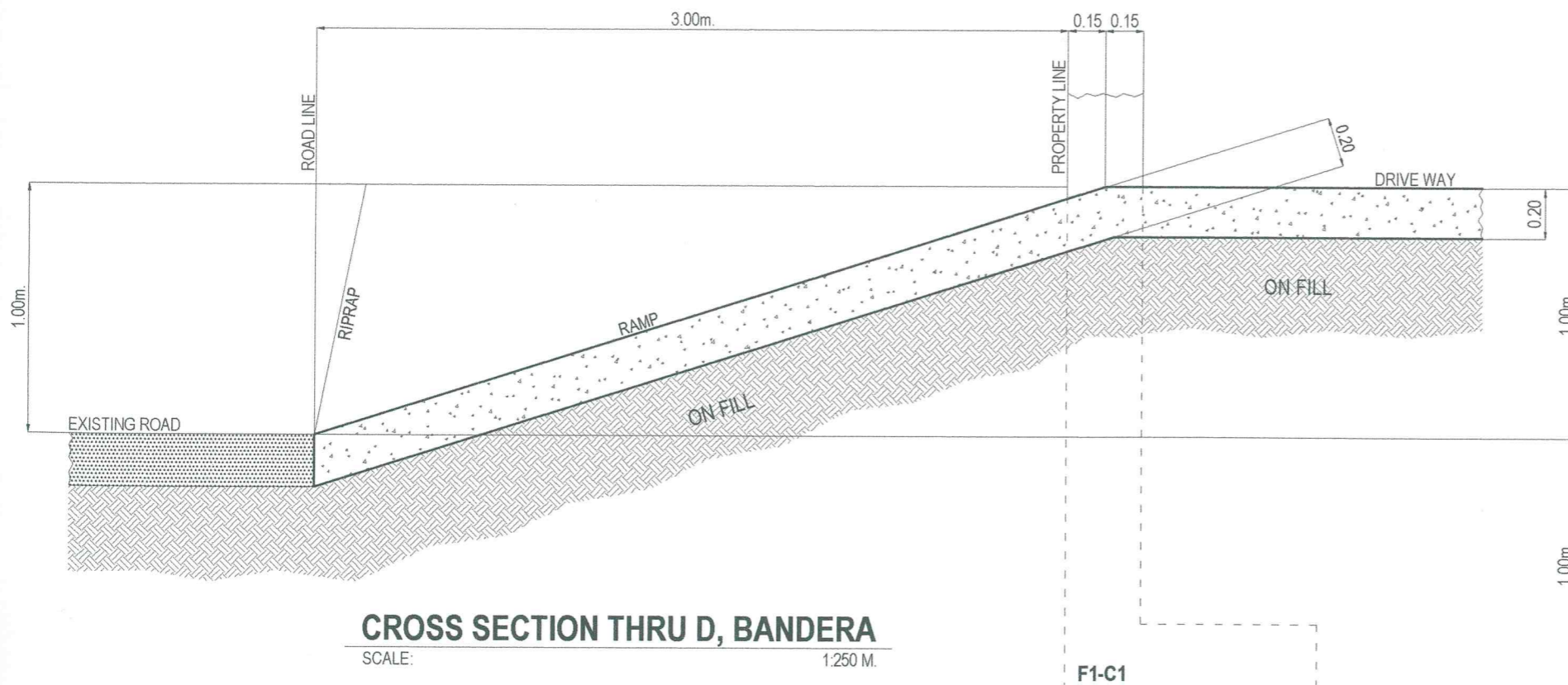
REV.	DATE	BY	DESCRIPTION	PROJECT:	DRAWN BY:	PREPARED BY:	REVIEWED BY:	SUBMITTED BY:	RECOMMENDING PROJECT IMPLEMENTATION:	APPROVED FOR PROJECT IMPLEMENTATION:	SHEET NO.
				PROPOSED 300 CU. M. REINFORCED CONCRETE GROUND TANKS AT BALUNO & BANDERA-DULIAN FOR DUMALON WATER SYSTEM	ARTHUR A. REYES PRINCIPAL DRAFTSMAN - DESIGN DIVISION	BUNNY L. DAMPIOS SENIOR ENGINEER A - DESIGN DIVISION	REX D. SALE, JR. SUPERVISING ENGINEER A - DESIGN DIVISION	EDITO M. BAUTISTA, JR. OIC - DESIGN DIVISION	MARLI ACOSTA - DE FIESTA AGM TECHNICAL SERVICE GROUP	REYNALDO R. CABILN GENERAL MANAGER	12
SHEET CONTENT:				AS INDICATED							



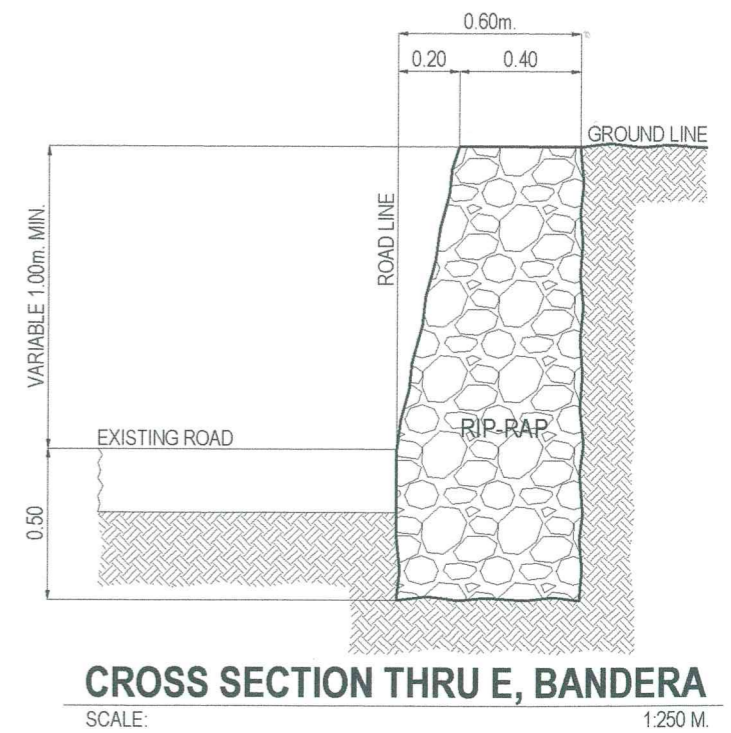
**FLOOR PLAN OF ENTRY, BANDERA**  
SCALE: 1:100 M.



**CROSS SECTION THRU C, BANDERA**  
SCALE: 1:250 M.



**CROSS SECTION THRU D, BANDERA**  
SCALE: 1:250 M.



**CROSS SECTION THRU E, BANDERA**  
SCALE: 1:250 M.



REV.	DATE	BY	DESCRIPTION

PROJECT:  
PROPOSED 300 CU. M. REINFORCED CONCRETE  
GROUND TANKS AT BALUNO & BANDERA-DULIAN  
FOR DUMALON WATER SYSTEM

SHEET CONTENT:  
AS INDICATED

DRAWN BY:  
**ARTHUR A. REYES**  
PRINCIPAL DRAFTSMAN - DESIGN DIVISION

PREPARED BY:  
**BUNNY L. DAMPIOS**  
SENIOR ENGINEER A - DESIGN DIVISION

REVIEWED BY:  
**REX D. SALE, JR.**  
SUPERVISING ENGINEER A - DESIGN DIVISION

SUBMITTED BY:  
**EDITO M. BAUTISTA, JR.**  
OIC - DESIGN DIVISION

RECOMMENDING PROJECT IMPLEMENTATION:  
**MARLI ACOSTA - DE FIESTA**  
AGM - TECHNICAL SERVICES GROUP

APPROVED FOR PROJECT IMPLEMENTATION:  
**REYNALDO R. CABILN**  
GENERAL MANAGER

SHEET NO.  
**13**